



Disparities in Diabetes in Rhode Island

Annie Gjelsvik, PhD

Rhode Island Department of Health

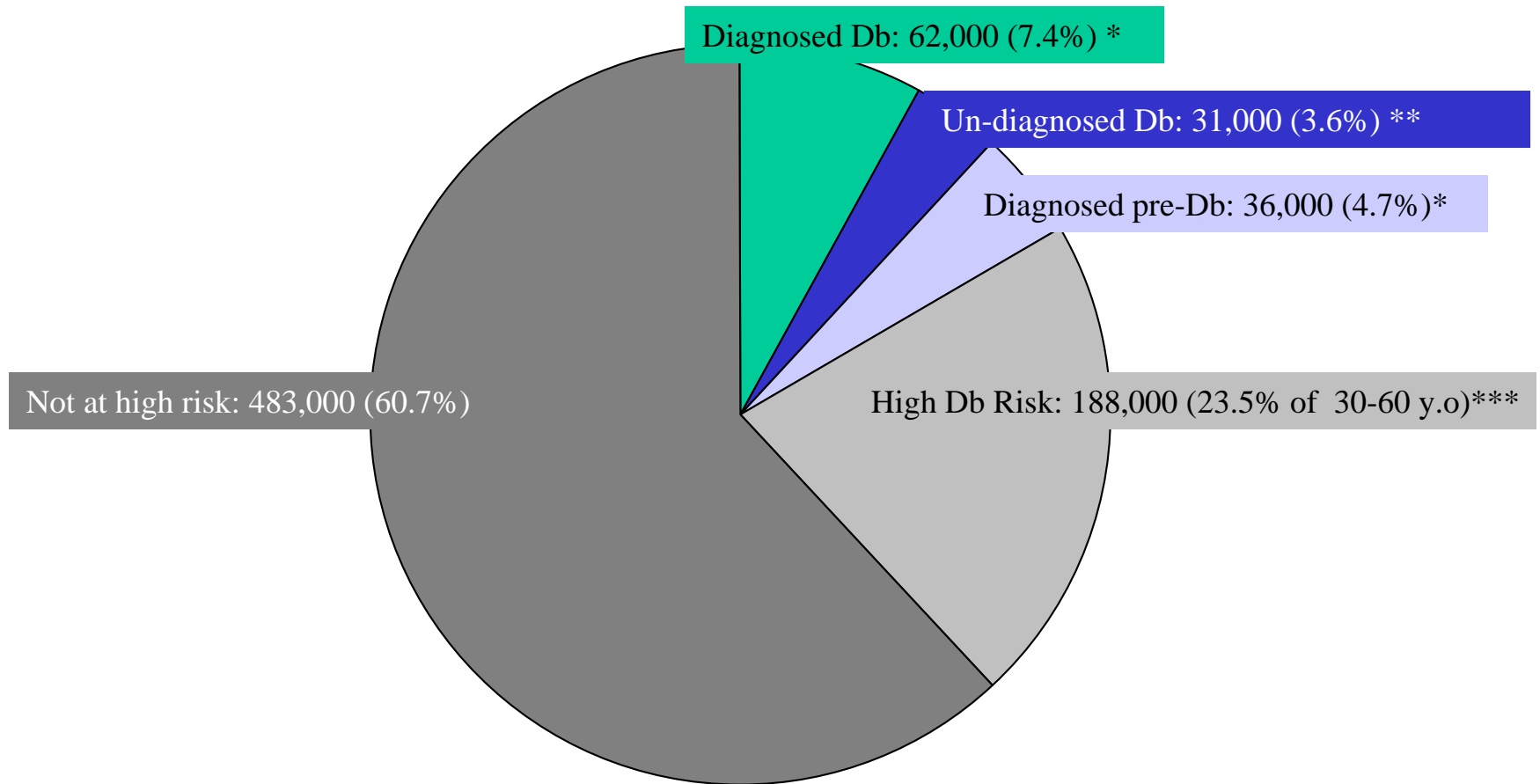
November 2008

Measurement



- Prevalence of diagnosed diabetes and pre-diabetes among adults
- Rate of serious outcomes
- Prevalence of receipt of clinical preventive services among adults with diabetes

Estimated # of RI Adults With Diabetes or At Risk for Diabetes, 2008



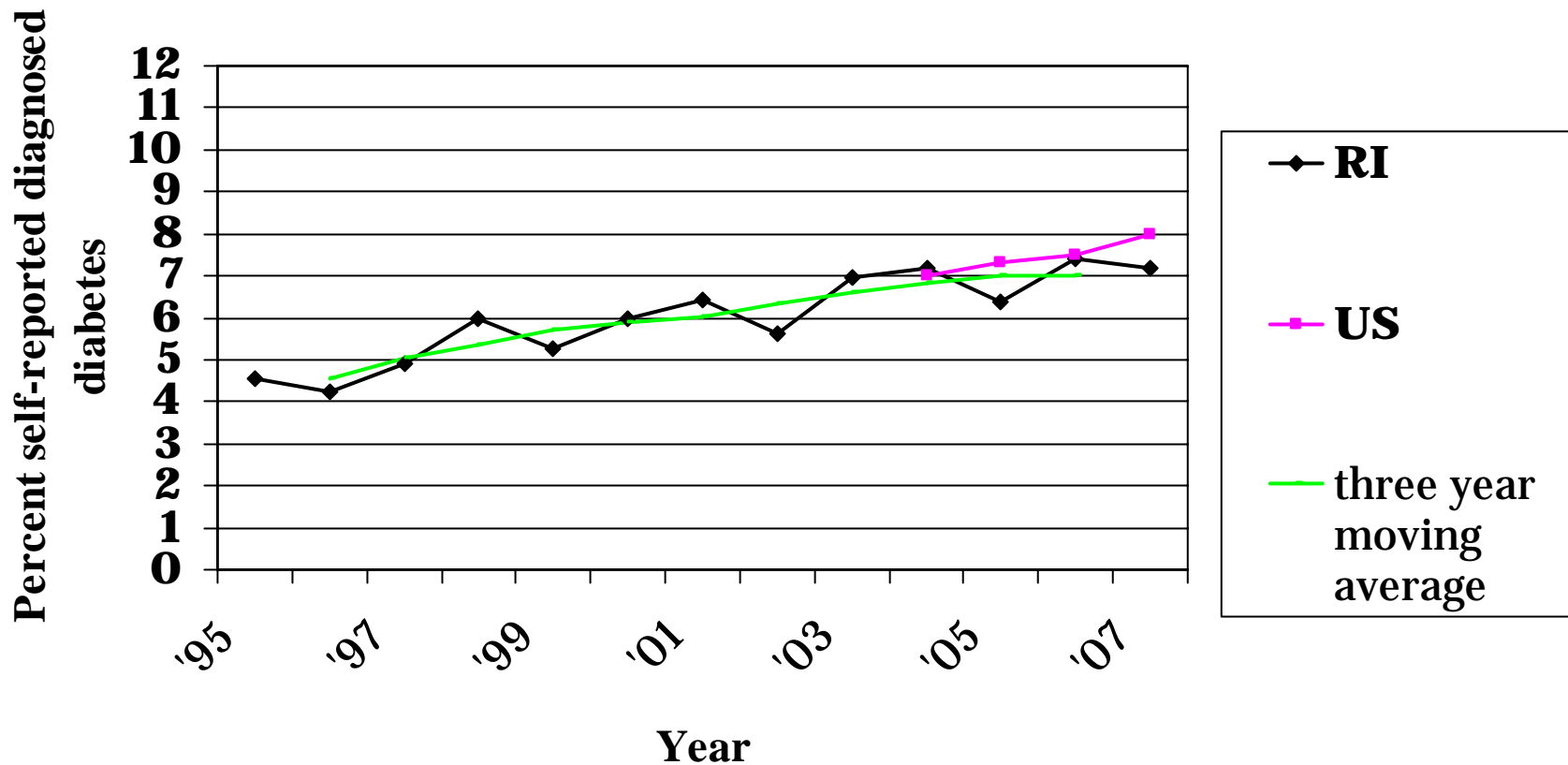
*2008 RI-BRFSS

** Estimated from NHANES III data

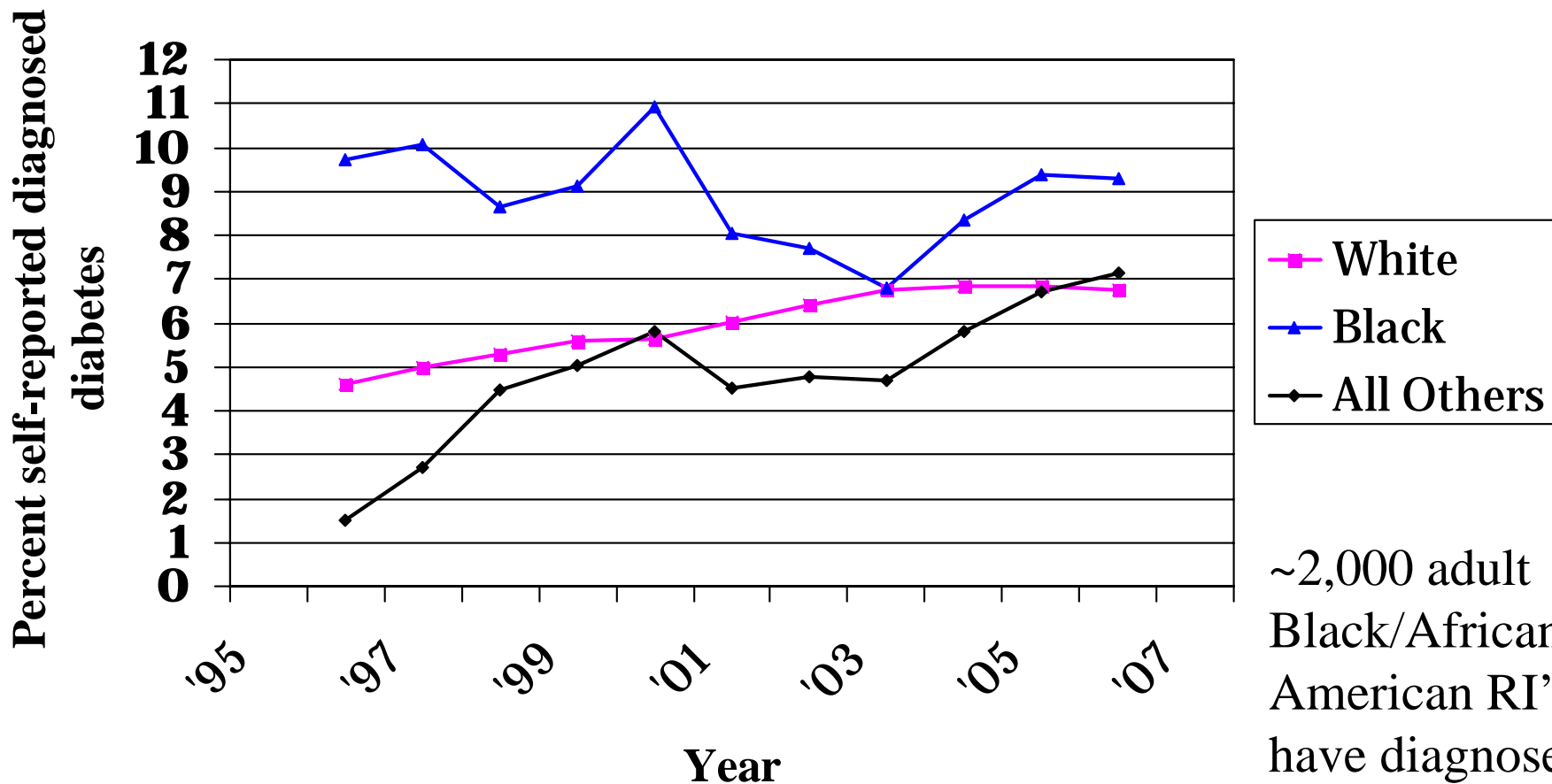
*** 2003 RI-BRFSS

Total: 800,000 18+ adults in RI

Prevalence of Diabetes among RI Adults 1995-2007

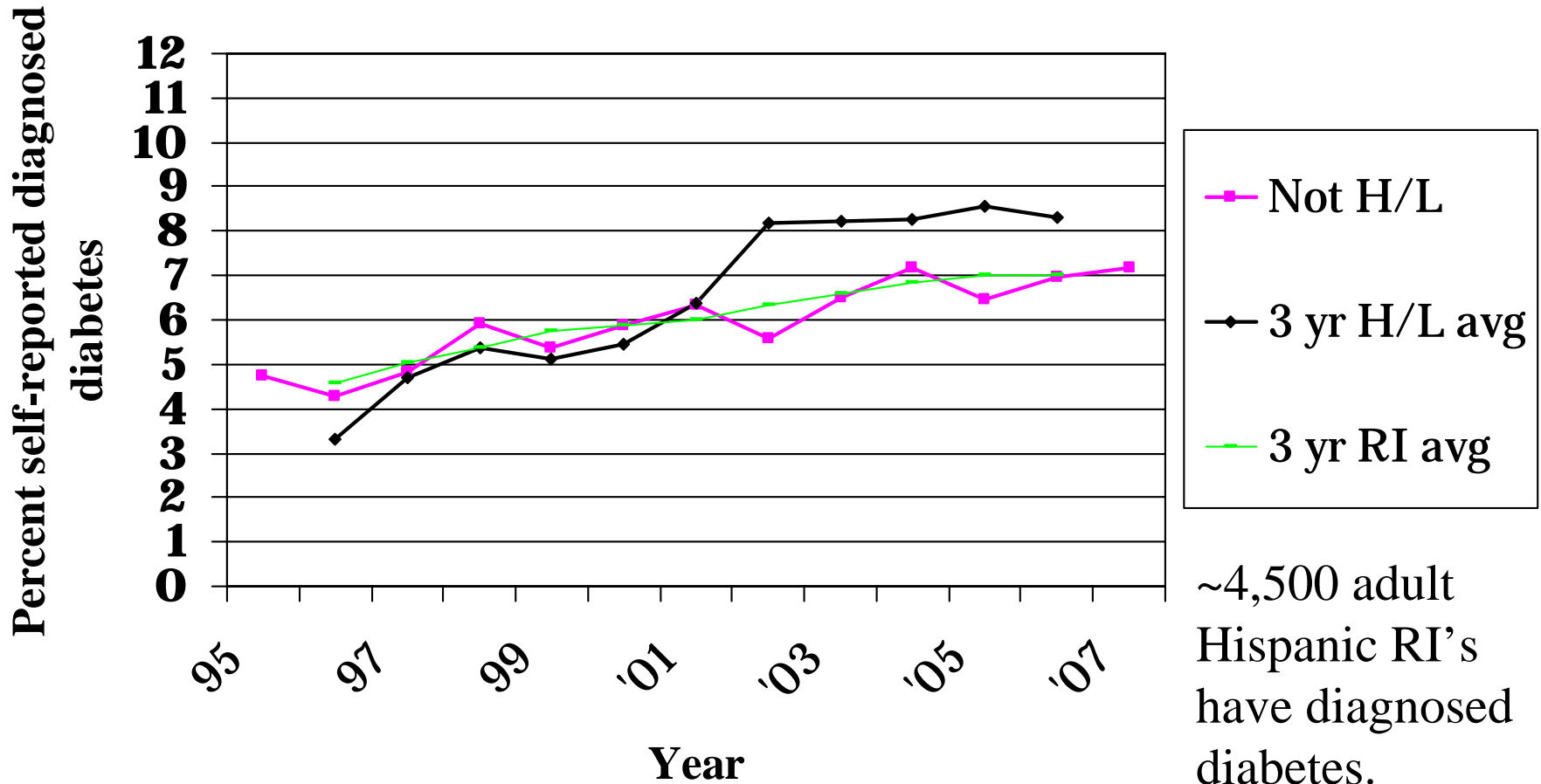


Trend of Diabetes among RI Adults by Race – 3 year moving averages



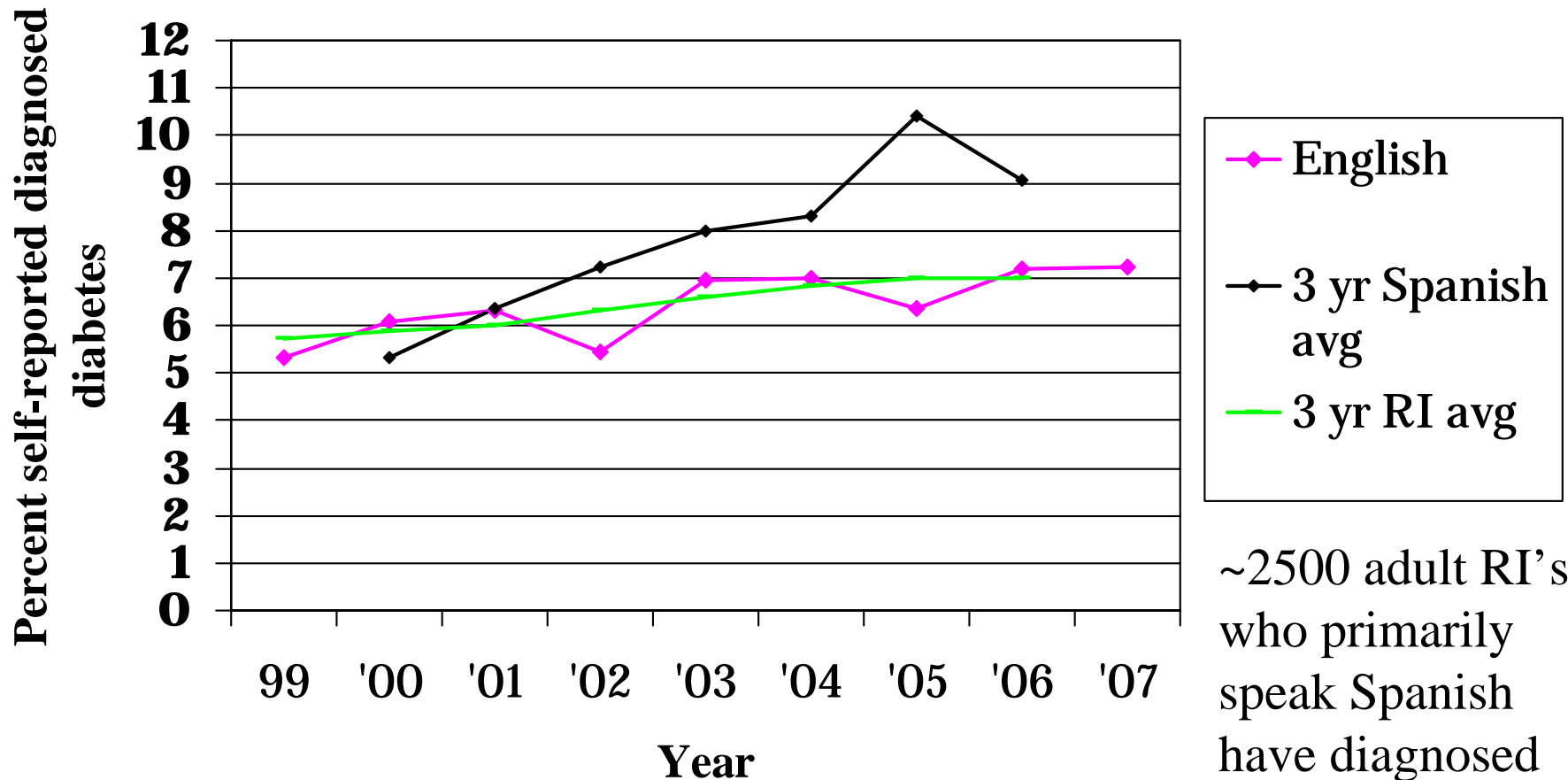
~2,000 adult Black/African American RI's have diagnosed diabetes.

Trend of Diabetes among RI Adults by Ethnicity



~4,500 adult Hispanic RI's have diagnosed diabetes.

Trend of Diabetes among RI Adults by language

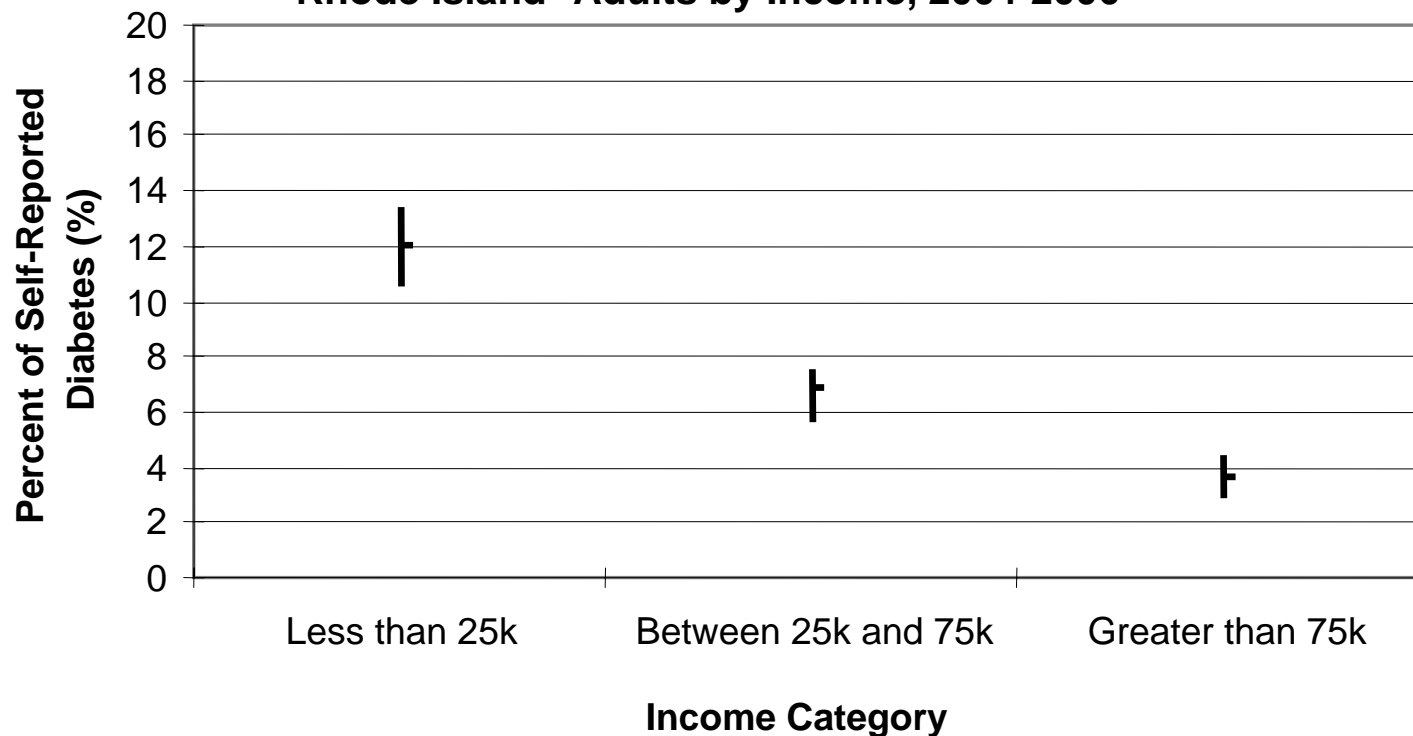


~2500 adult RI's who primarily speak Spanish have diagnosed diabetes.

Prevalence of Diagnosed Diabetes by Income

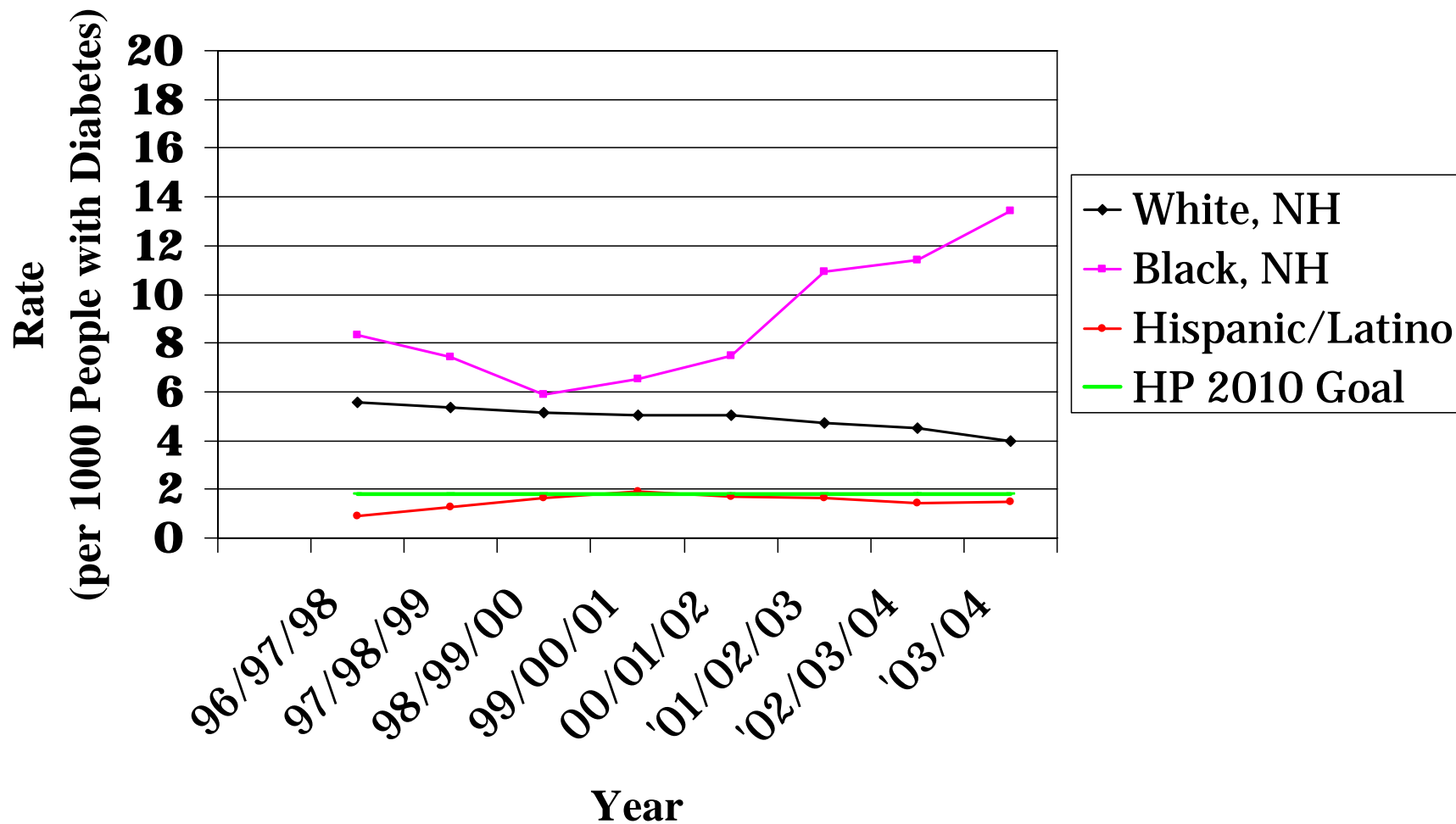


Figure 4: Prevalence of Diagnosed Diabetes Among Rhode Island* Adults by Income, 2004-2006



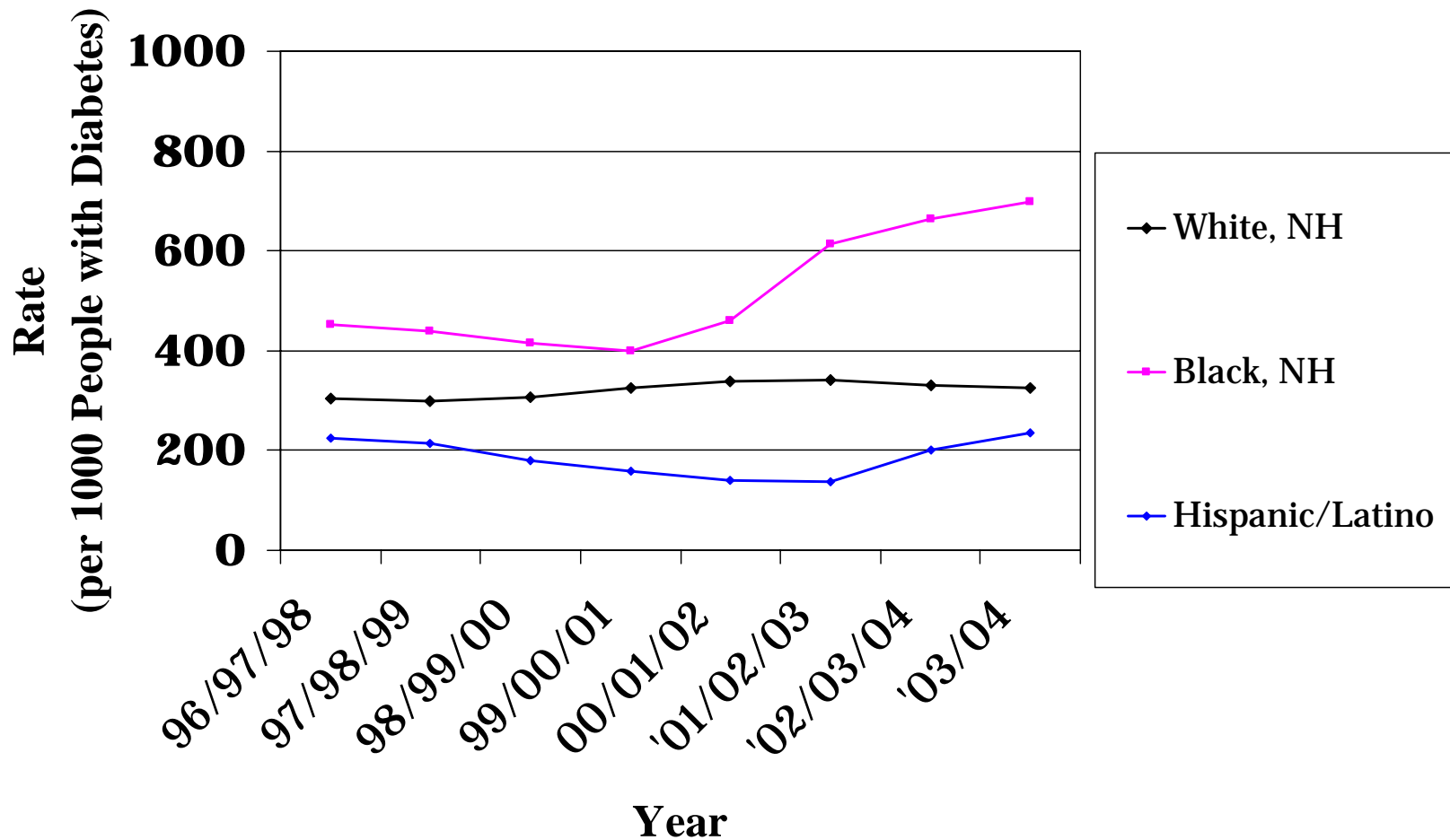
~12,000 adult RI's with an income < 25k have diagnosed diabetes.

Age-adjusted Hospital Discharge Rates for NTLEA as First-Listed Diagnosis and Diabetes as any other Diagnosis



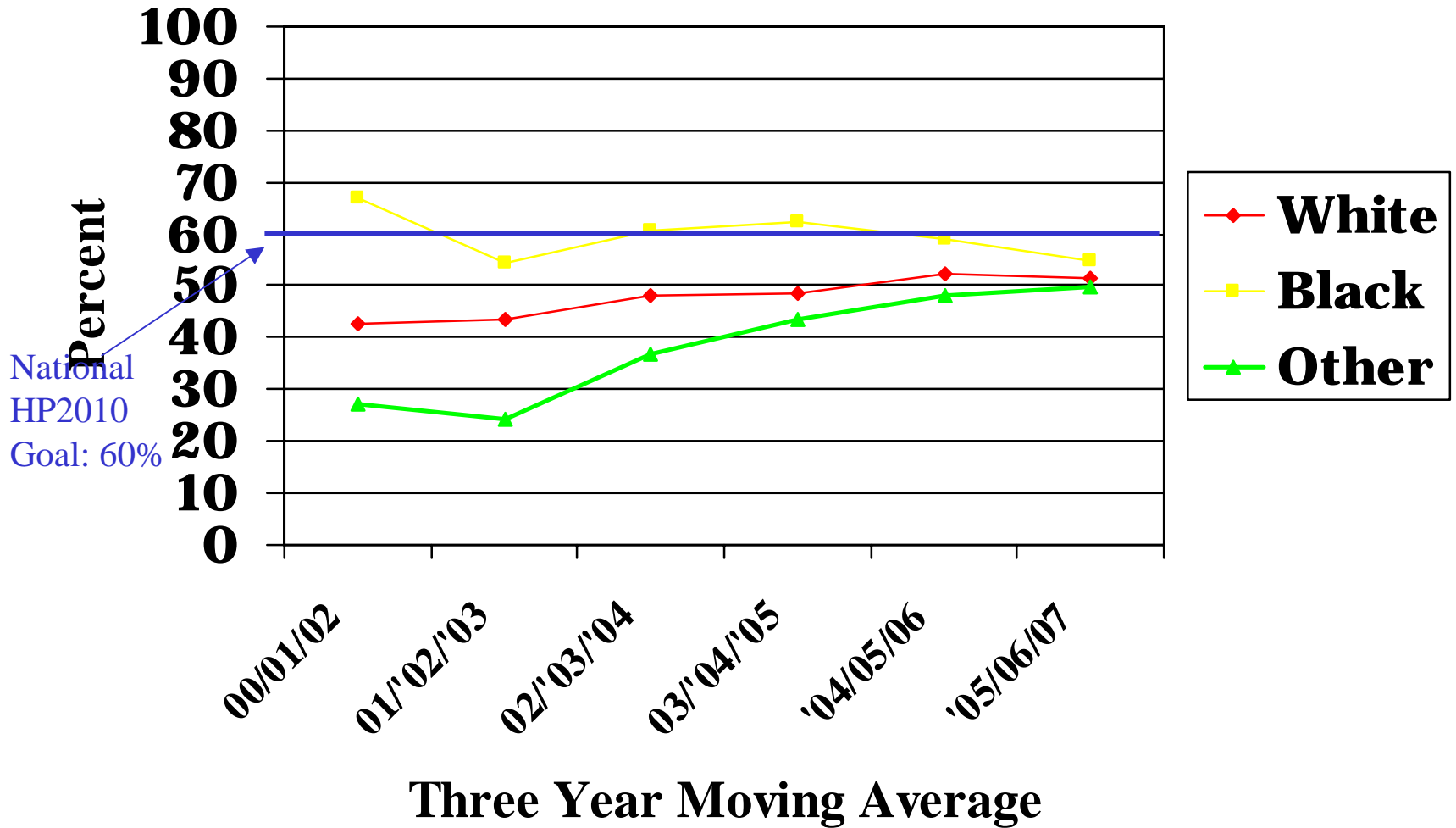
Data Sources: RI Hospital Discharge data and RI BRFSS

Age-adjusted Discharge Rate for Db as Any Discharge

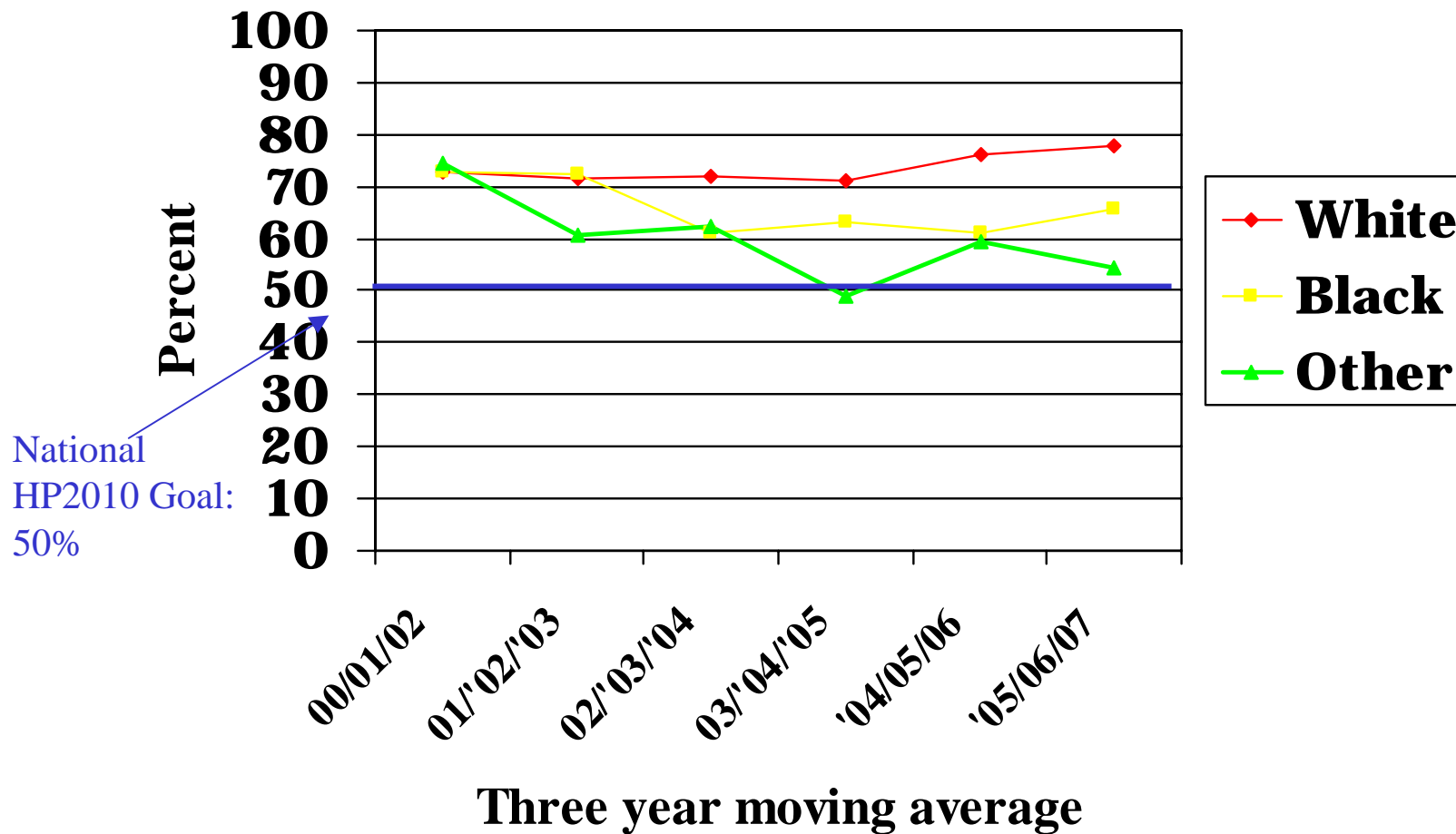


Data Sources: RI Hospital Discharge data and RI BRFSS

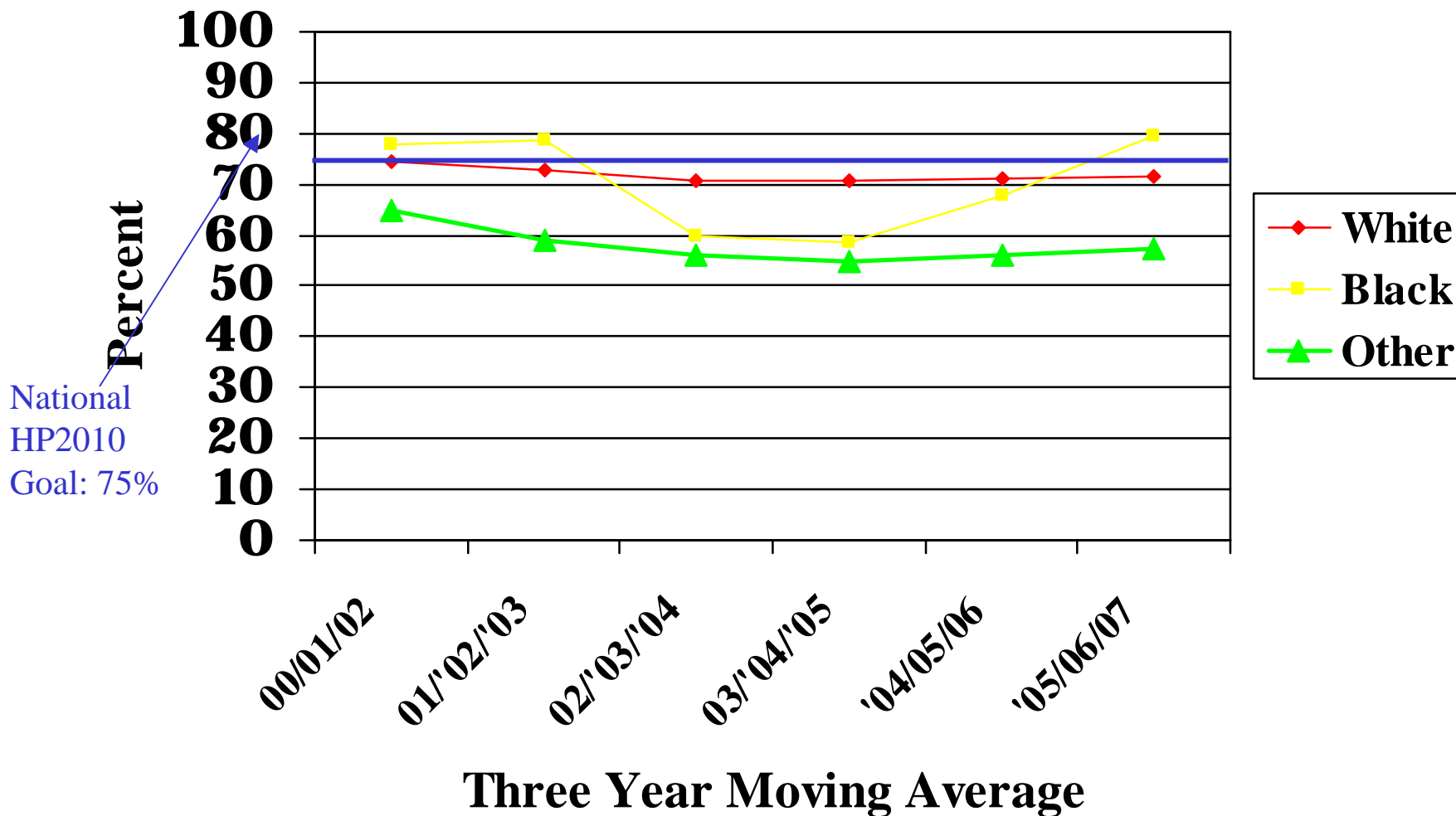
Diabetes Outpatient Education



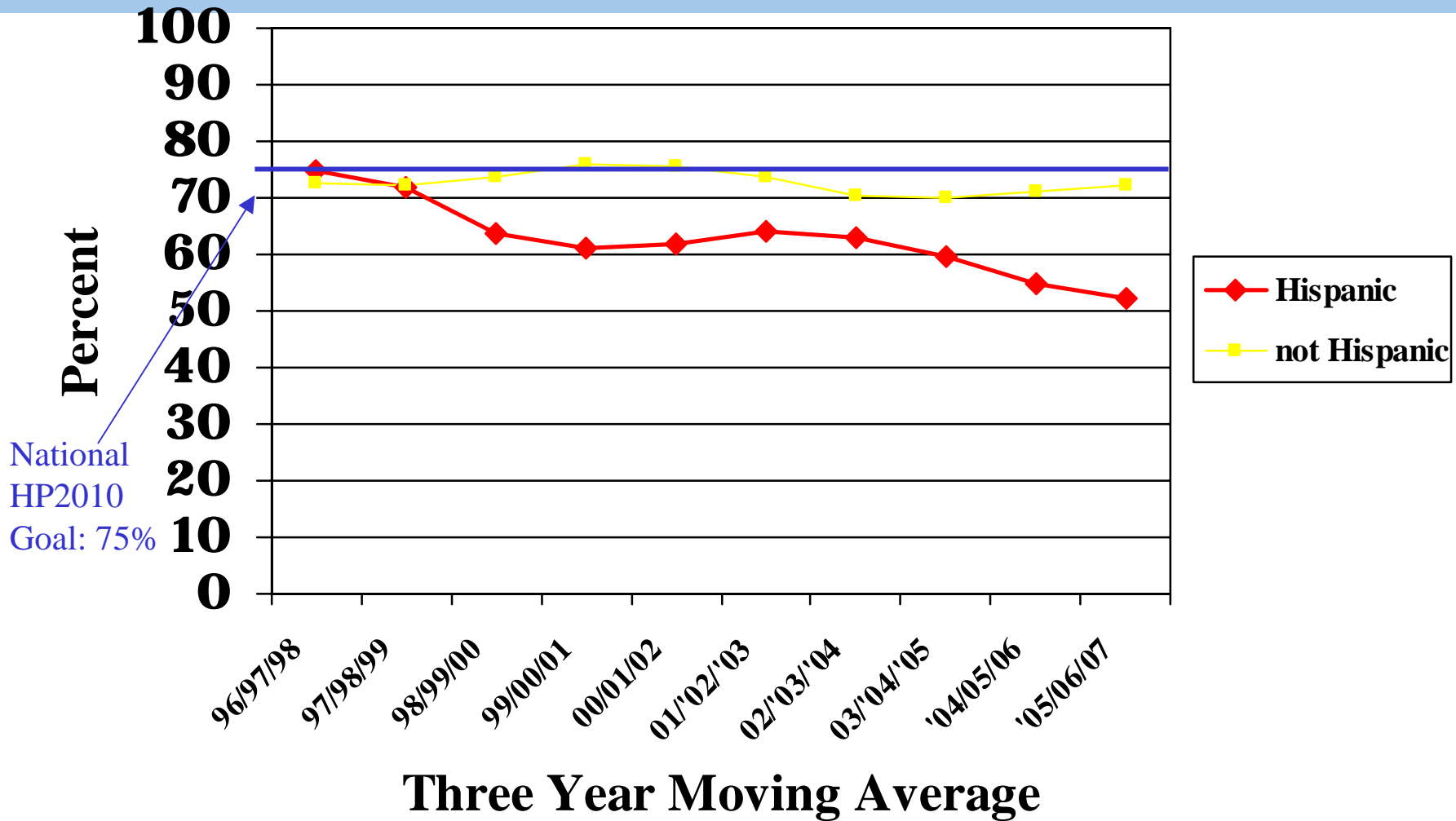
At least one Hemoglobin A1c



Annual Foot Exam



Annual Foot Exam by Ethnicity



Summary



- Diabetes is increasing in RI
- Higher prevalence of diabetes
 - Racial and Ethnic minorities
 - Spanish as primary language
 - Lower income
- Racial and Ethnic minorities have greater rate of serious outcomes due to diabetes
- Racial and Ethnic minorities receive fewer clinical preventive services, but improving



Annie Gjelsvik

Diabetes Prevention and Control Program

401.222.5119

Annie.Gjelsvik@health.ri.gov

www.health.ri.gov